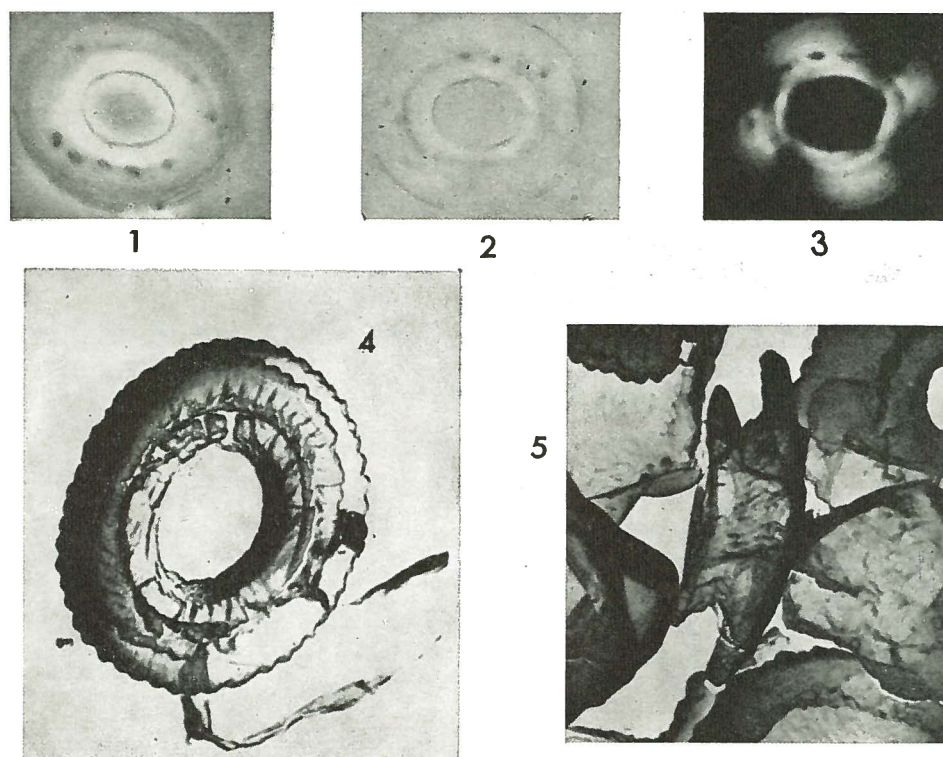


Apertapetra samodurovi HAY, MOHLER & WADE, 1966



- FIG. 1 — *Apertapetra samodurovi* n. sp. Distal view of specimen in phase contrast. Paratype: UI-H-2077 (Nal 11) 2500 x.
FIG. 2 — *Apertapetra samodurovi* n. sp. Distal view of specimen in ordinary light. Paratype: UI-H-2077 (Nal 11) 2500 x.
FIG. 3 — *Apertapetra samodurovi* n. sp. Distal view of specimen between crossed nicols. Paratype: UI-H-2077 (Nal 11) 2500 x.
FIG. 4 — *Apertapetra samodurovi* n. sp. Distal view, electronmicrograph of carbon replica. UI-H-2078 (Nal 9) 10,000 x.
FIG. 5 — *Apertapetra samodurovi* n. sp. Side view, electronmicrograph of carbon replica. UI-H-2079 (Nal 11) 10,000 x.

Description:

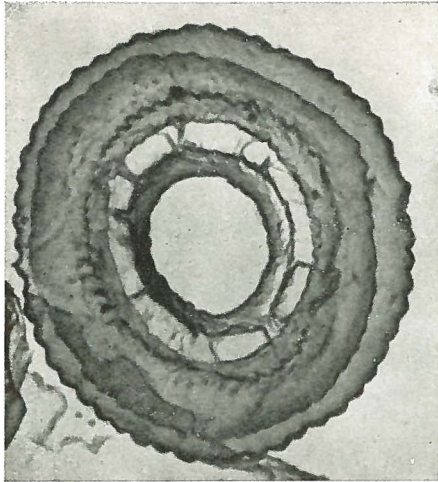
Diagnosis: A broadly elliptical species of *Apertapetra* with a central opening $\frac{1}{3}$ — $\frac{1}{2}$ the diameter of the coccolith.

Description: Distal shield composed of usually 54—55 segments separated by sutures having a slight clockwise inclination in distal view; peripheral termination of the segments bluntly pointed, producing a serrate margin, proximal shield similar to distal shield in all respects except not so wide; tube composed of a cycle of 54—55 tall lath-like elements having sinistral imbrication in distal view.

Dimensions of Holotype: Length 5.9 μ , width 5.2 μ .

Dimensions of Paratypes: Length 5—12 μ , width 4—11 μ .

6



7

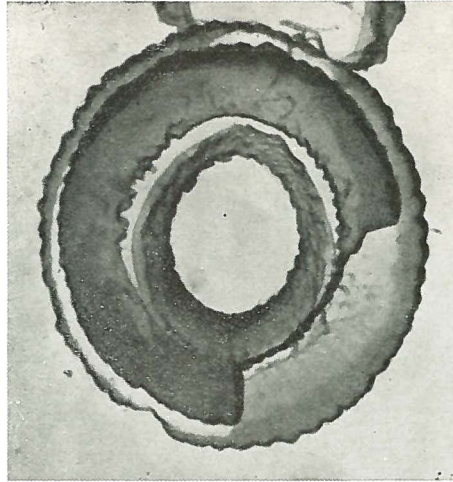


FIG. 6 — *Apertapetra samodurovi* n. sp. Distal view, electronmicrograph of carbon replica. Holotype: UI-H-2080 (Nal 11) 10,000 x.
 FIG. 7 — *Apertapetra samodurovi* n. sp. Proximal view, electronmicrograph of carbon replica. Paratype: UI-H-2081 (Nal 11) 10,000 x.

Remarks:

Relations: Coccoliths of this sort, although common in many sediments, have not been given specific names in the past, but have been referred to as *Coccolithus pelagicus*. The non-imbriate nature of the segments of the shields distinguishes this species from species of the *C. pelagicus* group.

Type level:

Globigerinoides conglobatus zone, Alminskian Stage. *Stratum typicum*: Nal 11.

Distribution: This species is found in all of the samples from Nal'chik, but is especially abundant in samples 9 and 11.

Type locality:

Nal'chik, Northwest Caucasus.

Depository:

Department of Geology, University of Illinois, Urbana. Holotype: UI-H-2080; paratypes: UI-H-2077, 2078, 2079, 2081.

Author:

Hay W.W., Mohler H. and Wade M.E., 1966, p. 388; pl. 6, figs. 1-7.

Reference:

Calcareous Nannofossils from Nal'chik (Northwest Caucasus). *Ecl. geol. Helv.*, vol. 59, n° 1, pp. 379-399, pls. 1-13.